

Southampton to London Pipeline Project

Volume 6

Environmental Statement (Volume C)
Chapter 1: Figures

Application Document: 6.3

Planning Inspectorate Reference Number: EN070005

APFP Regulation No. 5(2)(a)

Revision No. 1.0

May 2019

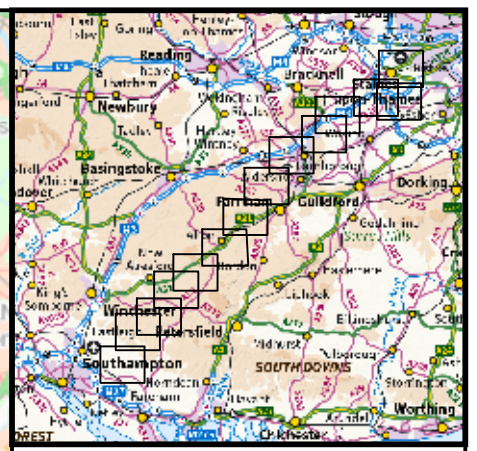
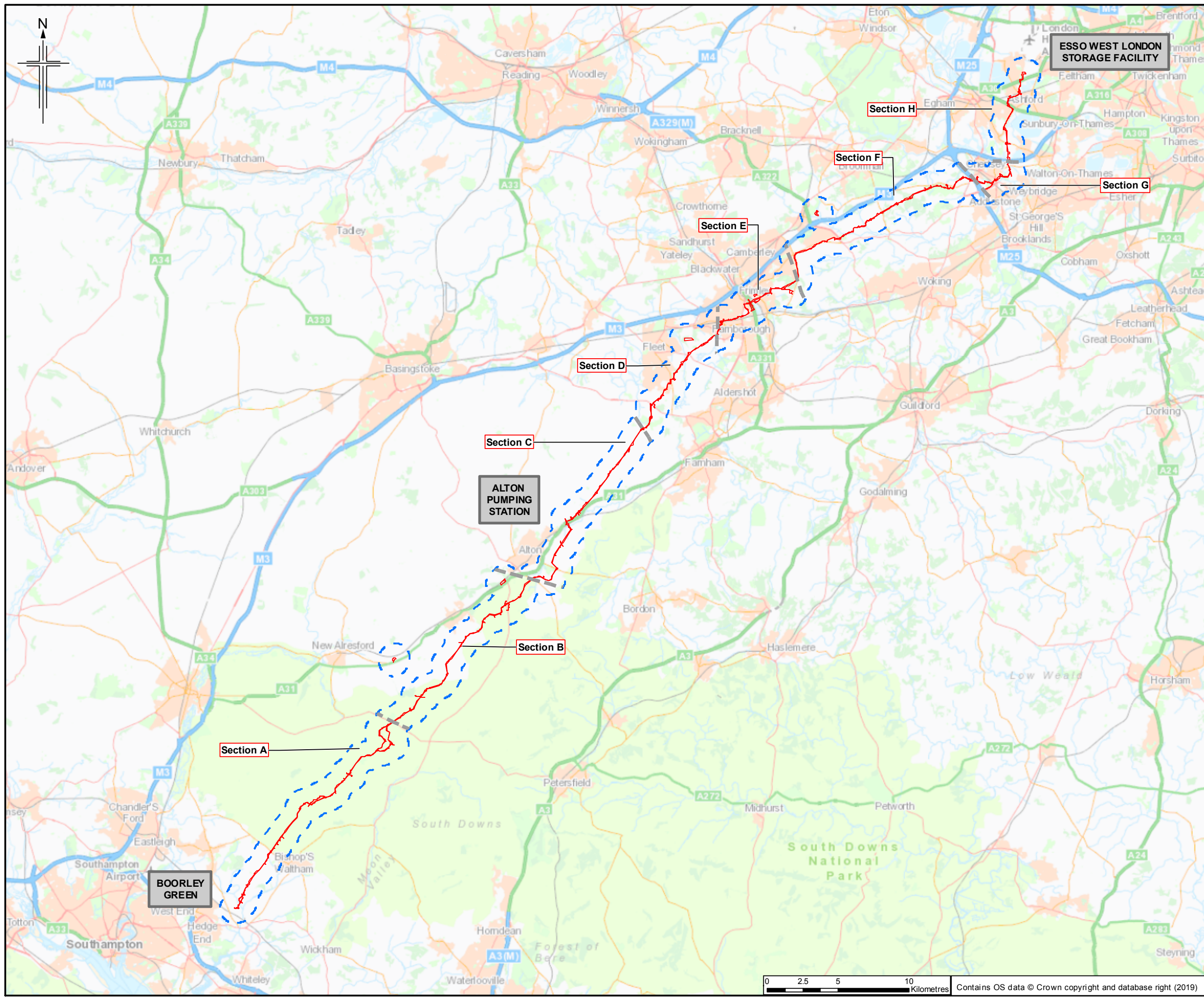


(This page is intentionally left blank)



Contents

Figure 1.1: Location of Scheme (Key Plan and 14 Sheets)



- Legend**
- Order Limits
 - Order Limits 1km buffer
 - Section break
 - Section break

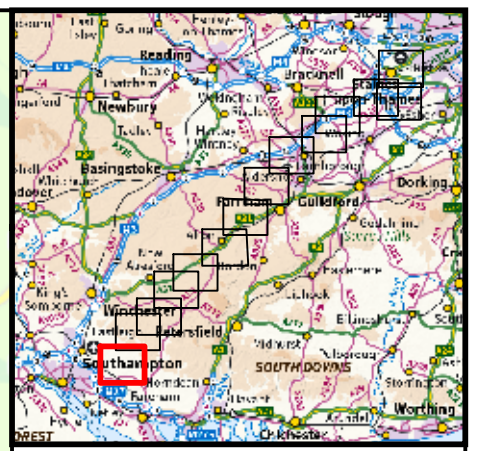
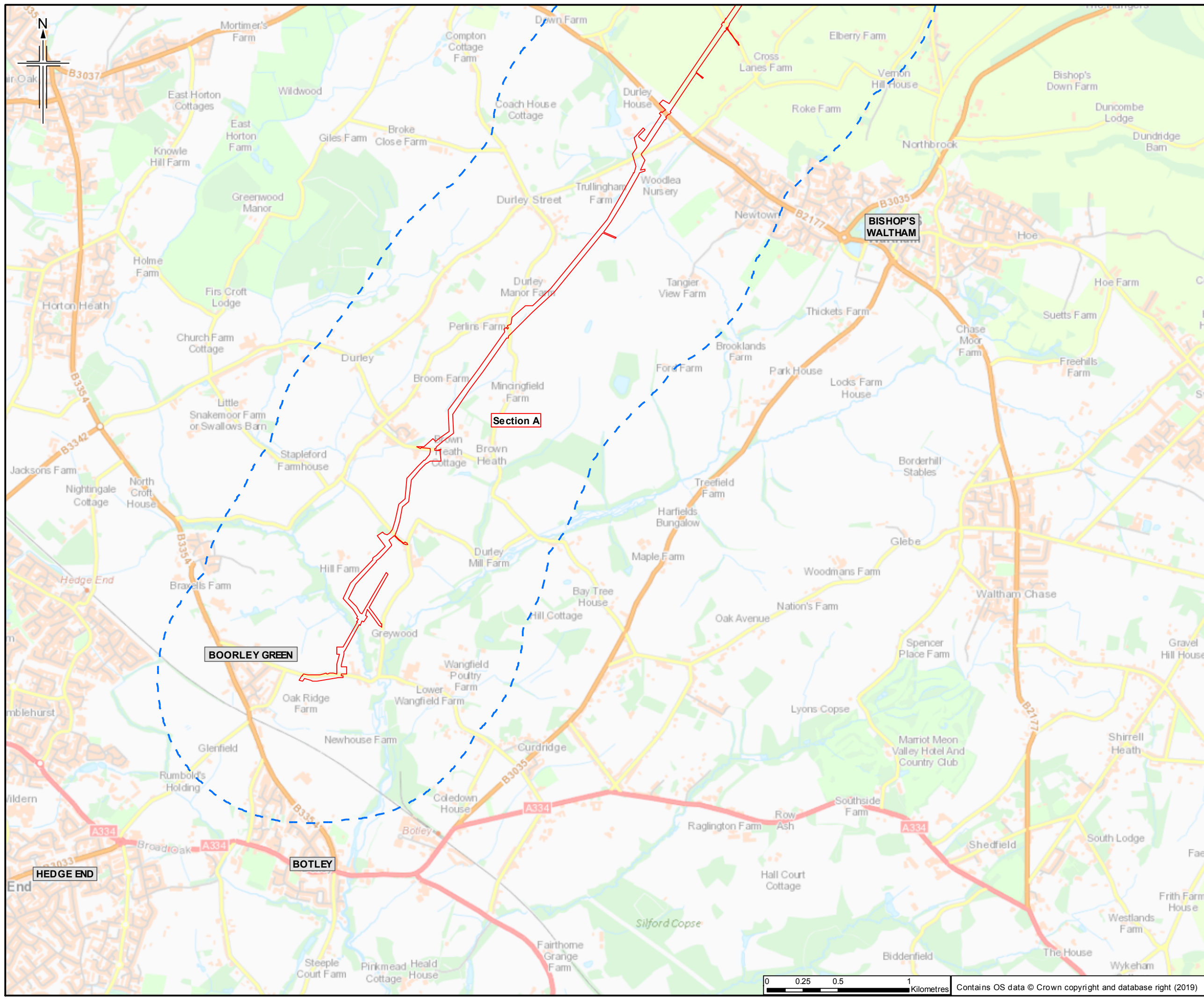
| | | | | | | |
|------|-----------|---------------------|---------|---------|-------|---------|
| 0 | 1/13/2019 | For Issue | HM | NS | CW | SH |
| Rev. | Rev. Date | Purpose of revision | OrigDwn | Checked | Rev'd | Apprv'd |
| | | | | | | |

Client
 Esso Petroleum Company, Limited
 Ermyn House,
 Ermyn Way,
 Leatherhead,
 Surrey,
 KT22 8UX

Project
 Southampton to London Pipeline Project

Drawing title
 ENVIRONMENTAL STATEMENT
 LOCATION OF SCHEME
 APFP Reg. (2009) 5(2)(o)

| | | |
|-----------------|---------------------------------|--------------|
| Drawing Status | For Issue | |
| Scale | 1:250,000 @ A3 | DO NOT SCALE |
| JACOBS No. | B2325300 | |
| ProjectWise No. | B2325300-JAC-000-ENV-DRG-001001 | |
| Drawing number | Figure 1.1 Key Plan | Rev 0 |



- Legend**
- Order Limits
 - Order Limits 1km buffer
 - Section break
 - Section break

Sheet displays part of Section A

| Rev. | Date | Purpose of revision | OrigDwn | Checked | Rev'd | Apprv'd |
|------|-----------|---------------------|---------|---------|-------|---------|
| 1 | 10/3/2019 | For Issue | HM | NS | CW | SH |

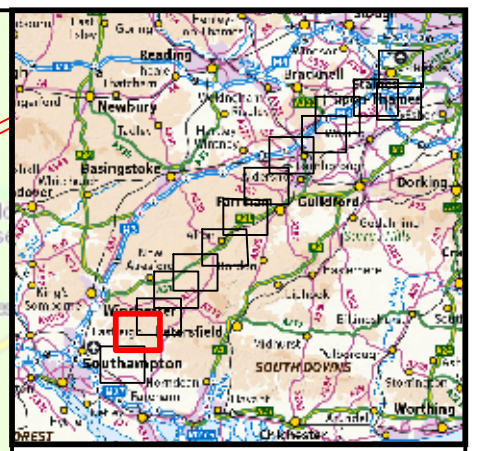
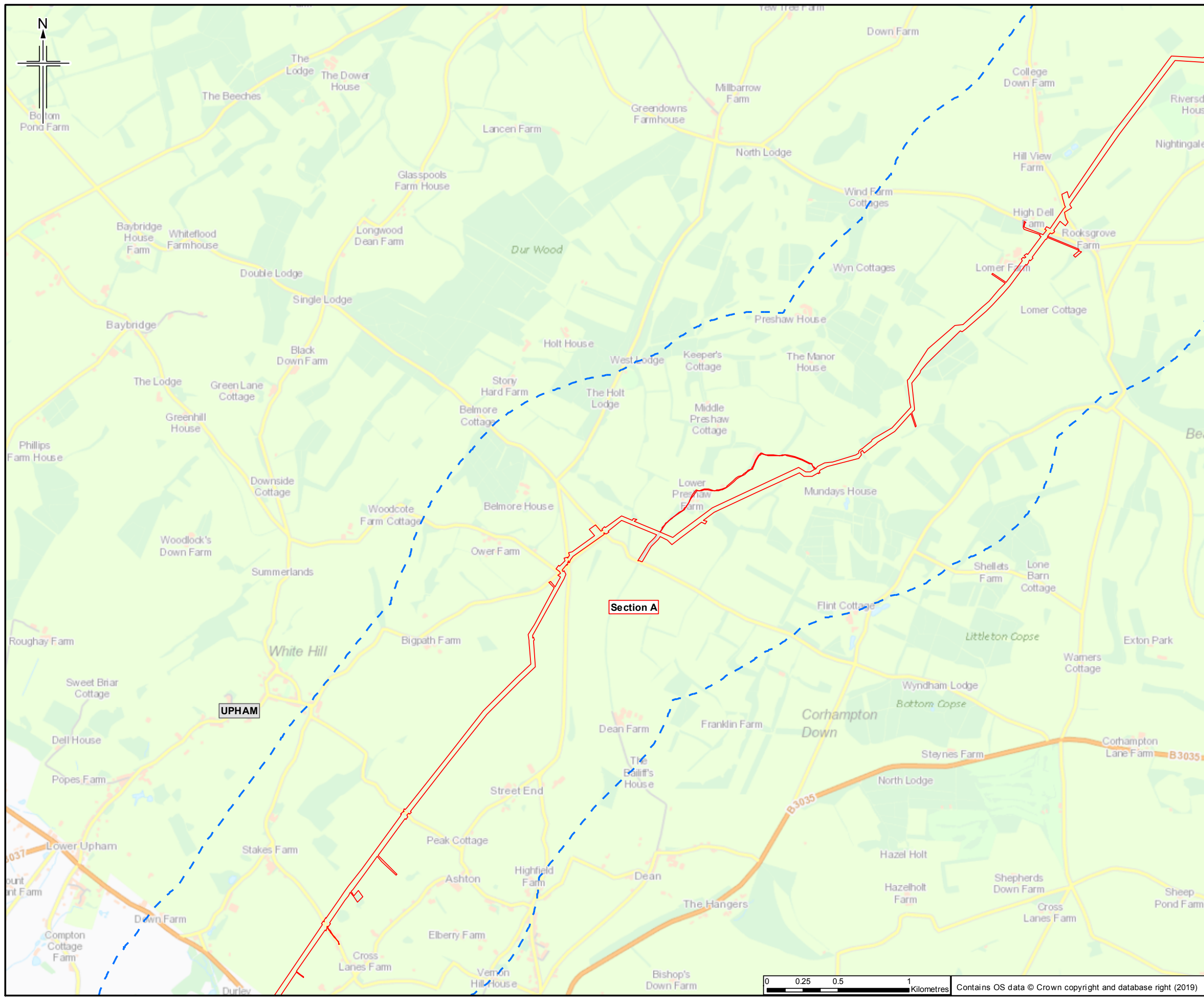


Client
Esso Petroleum Company, Limited
Ermyn House,
Ermyn Way,
Leatherhead,
Surrey,
KT22 8UX



Drawing title
**ENVIRONMENTAL STATEMENT
LOCATION OF SCHEME
APFP Reg. (2009) 5(2)(o)**

| Drawing Status | For Issue |
|-----------------|---------------------------------|
| Scale | 1:25,000 @ A3 DO NOT SCALE |
| JACOBS No. | B2325300 |
| ProjectWise No. | B2325300-JAC-000-ENV-DRG-001001 |
| Drawing number | Figure 1.1 Sheet 1 of 14 |
| Rev | 0 |



- Legend**
- Order Limits
 - Order Limits 1km buffer
 - Section break
 - Section break

Sheet displays part of Section A

| Rev. | Rev. Date | Purpose of revision | OrigDwn | Checked | Rev'd | Apprv'd |
|------|-----------|---------------------|---------|---------|-------|---------|
| 0 | 1/23/2019 | For Issue | HM | NS | CW | SH |

JACOBS
 1180 Epsom Road, Wokingham, Wokingham RG41 3DU, UK
 Tel: +44 (0) 18 445 7000 Fax: +44(0) 18 445 7001
 www.jacobs.com

Client
 Esso Petroleum Company, Limited
 Ermyn House,
 Ermyn Way,
 Leatherhead,
 Surrey,
 KT22 8UX

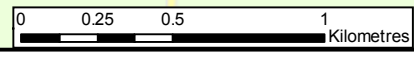
Project

Southampton to London Pipeline Project

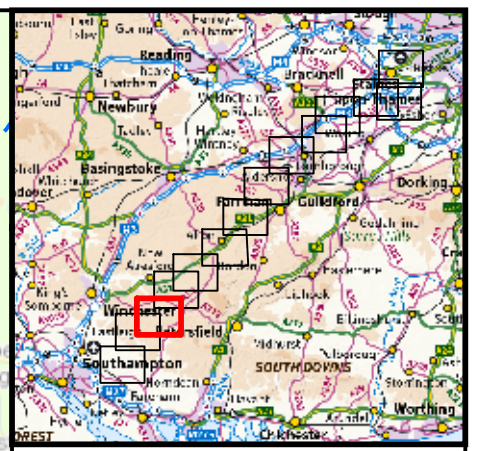
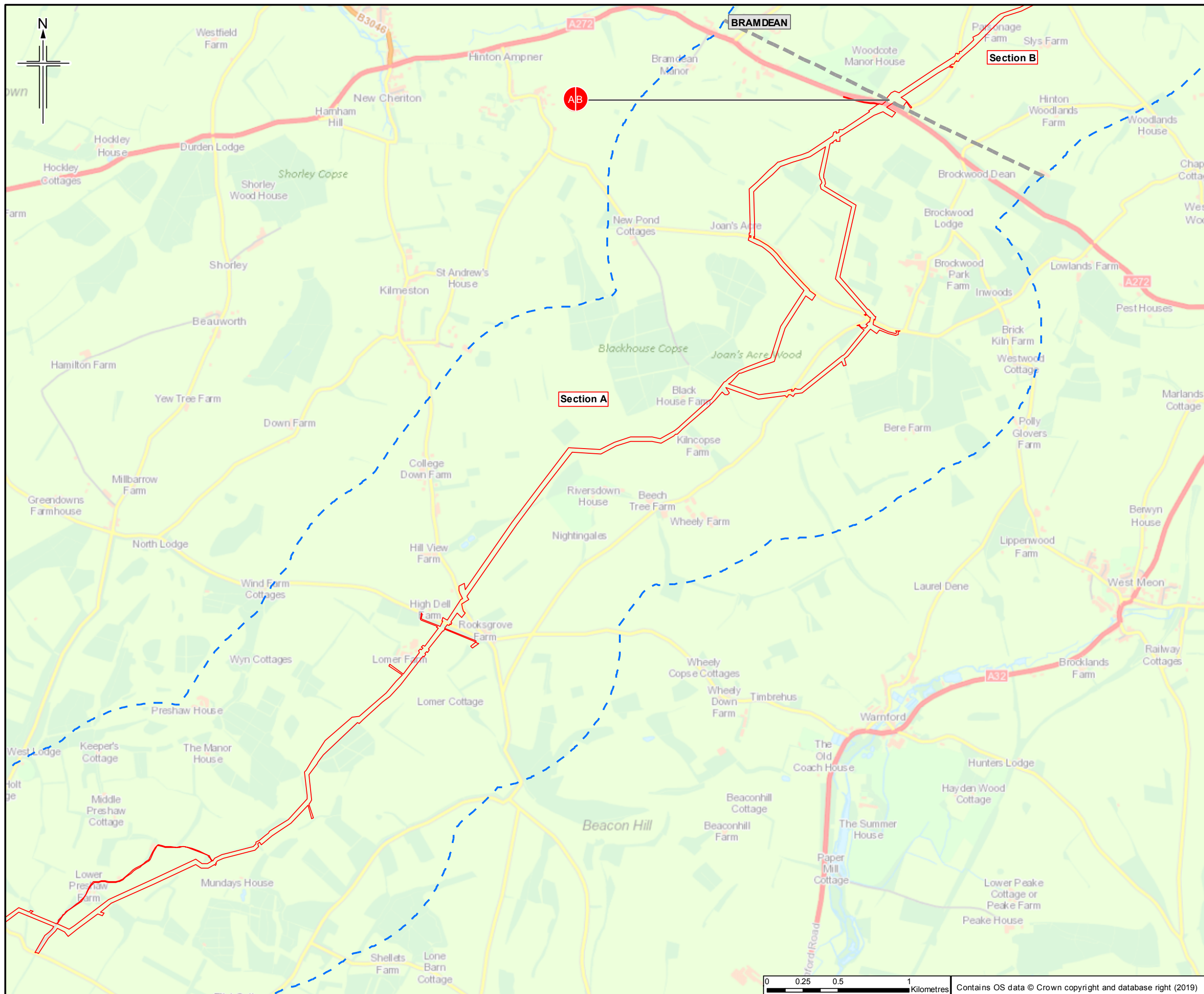
Drawing title

**ENVIRONMENTAL STATEMENT
 LOCATION OF SCHEME
 APPFP Reg. (2009) 5(2)(o)**

| | | |
|-----------------|---------------------------------|--------------|
| Drawing Status | For Issue | |
| Scale | 1:25,000 @ A3 | DO NOT SCALE |
| Jacobs No. | B2325300 | |
| ProjectWise No. | B2325300-JAC-000-ENV-DRG-001001 | |
| Drawing number | Figure 1.1 Sheet 2 of 14 | Rev 0 |



Contains OS data © Crown copyright and database right (2019)



- Legend**
- Order Limits
 - Order Limits 1km buffer
 - Section break
 - Section break

Sheet displays parts of Section A and Section B

| Rev. | Rev. Date | Purpose of revision | OrigDwn | Checked | Rev'd | Apprv'd |
|------|-----------|---------------------|---------|---------|-------|---------|
| 0 | 1/23/2019 | For Issue | HM | NS | CW | SH |

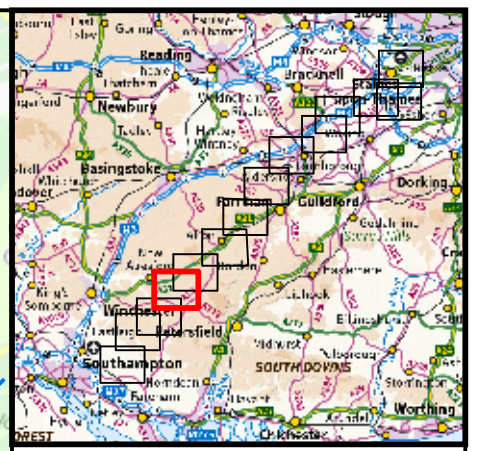
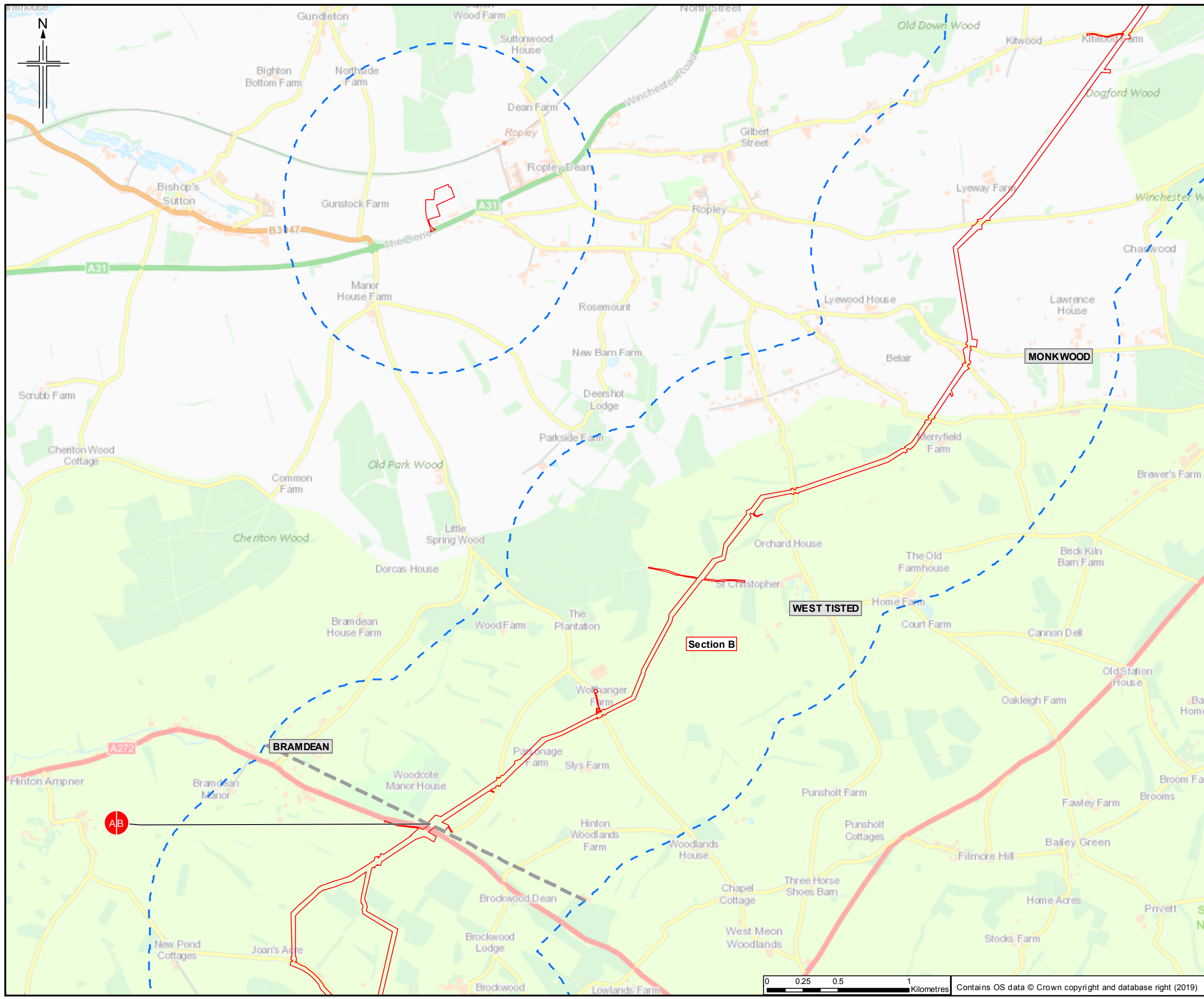


Client
Esso Petroleum Company, Limited
Ermyn House,
Ermyn Way,
Leatherhead,
Surrey,
KT22 8UX



Drawing title
**ENVIRONMENTAL STATEMENT
LOCATION OF SCHEME
APFP Reg. (2009) 5(2)(o)**

| | |
|-----------------|---------------------------------|
| Drawing Status | For Issue |
| Scale | 1:25,000 @ A3 DO NOT SCALE |
| JACOBS No. | B2325300 |
| ProjectWise No. | B2325300-JAC-000-ENV-DRG-001001 |
| Drawing number | Figure 1.1 Sheet 3 of 14 |
| | Rev 0 |



- Legend**
- Order Limits
 - Order Limits 1km buffer
 - Section break
 - Section break

Sheet displays parts of Section A and Section B

| Rev. | Rev. Date | Purpose of revision | OrigDwn | Checked | Rev'd | Apprv'd |
|------|-----------|---------------------|---------|---------|-------|---------|
| 0 | 1/23/2019 | For Issue | HM | NS | CW | SH |

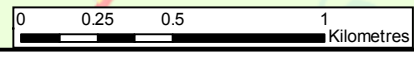
JACOBS
1180 Epsom Road, Weybridge, Middlesex, Surrey, UK
 Tel: +44 (0)181 945 7000 Fax: +44(0)181 945 7001
 www.jacobs.com

Client
 Esso Petroleum Company, Limited
 Ermyn House,
 Ermyn Way,
 Leatherhead,
 Surrey,
 KT22 8UX

Project
Southampton to London Pipeline Project

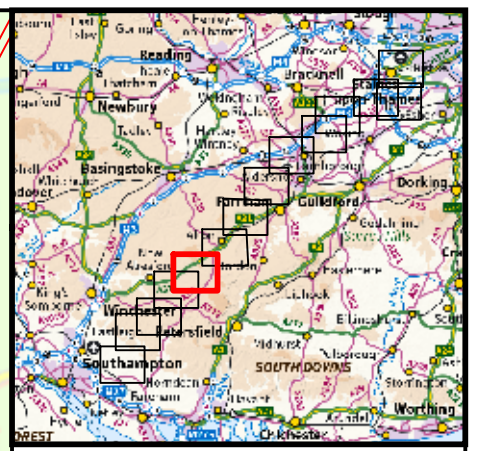
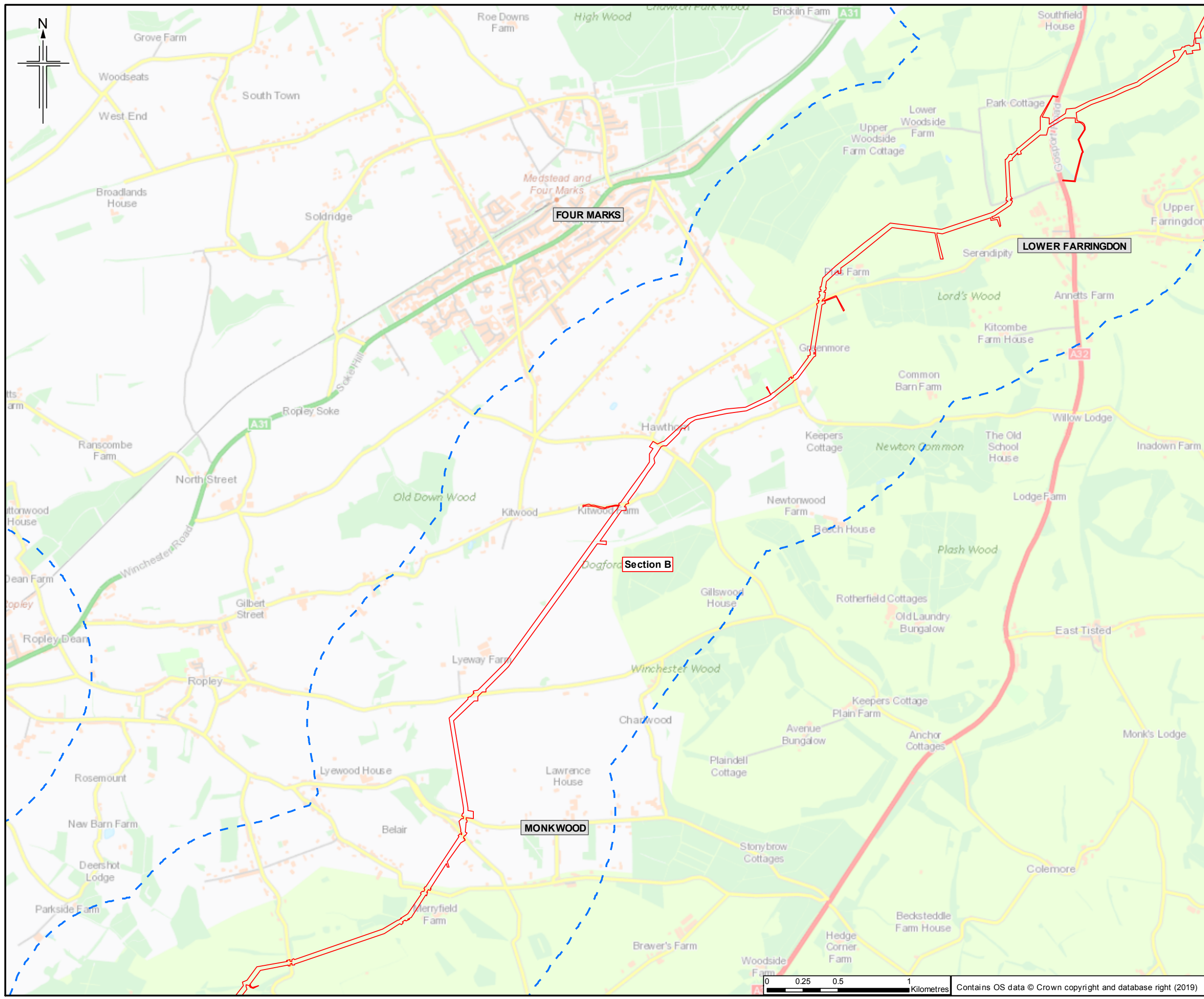
Drawing title
**ENVIRONMENTAL STATEMENT
 LOCATION OF SCHEME
 APFP Reg. (2009) 5(2)(o)**

| Drawing Status | For Issue |
|-----------------|---------------------------------|
| Scale | 1:25,000 @ A3 DO NOT SCALE |
| Jacobs No. | B2325300 |
| ProjectWise No. | B2325300-JAC-000-ENV-DRG-001001 |
| Drawing number | Figure 1.1 Sheet 4 of 14 |
| Rev | 0 |



Contains OS data © Crown copyright and database right (2019)

This drawing is not to be used in whole or part other than for the intended purpose and project as defined on this drawing. Refer to the contract for full terms and conditions.



- Legend**
- Order Limits
 - Order Limits 1km buffer
 - Section break
 - Section break

Sheet displays part of Section B

| Rev. | Rev. Date | Purpose of revision | OrigDwn | Checked | Rev'd | Apprv'd |
|------|-----------|---------------------|---------|---------|-------|---------|
| 0 | 1/23/2019 | For Issue | HM | NS | CW | SH |

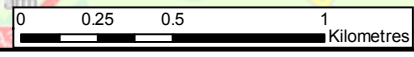
JACOBS
1180 Epsom Road, Weybridge, Middlesex, Surrey, UK
 Tel: +44 (0)181 945 7000 Fax: +44(0)181 945 7001
 www.jacobs.com

Client
 Esso Petroleum Company, Limited
 Ermyn House,
 Ermyn Way,
 Leatherhead,
 Surrey,
 KT22 8UX

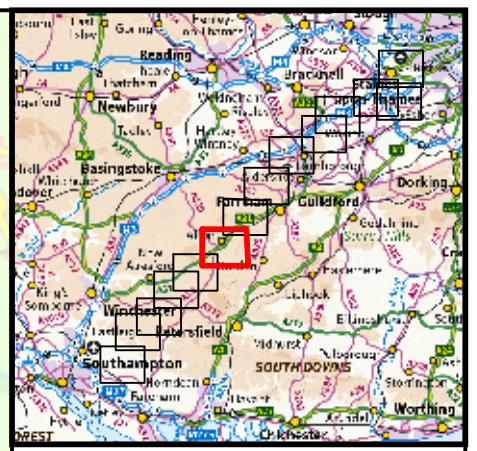
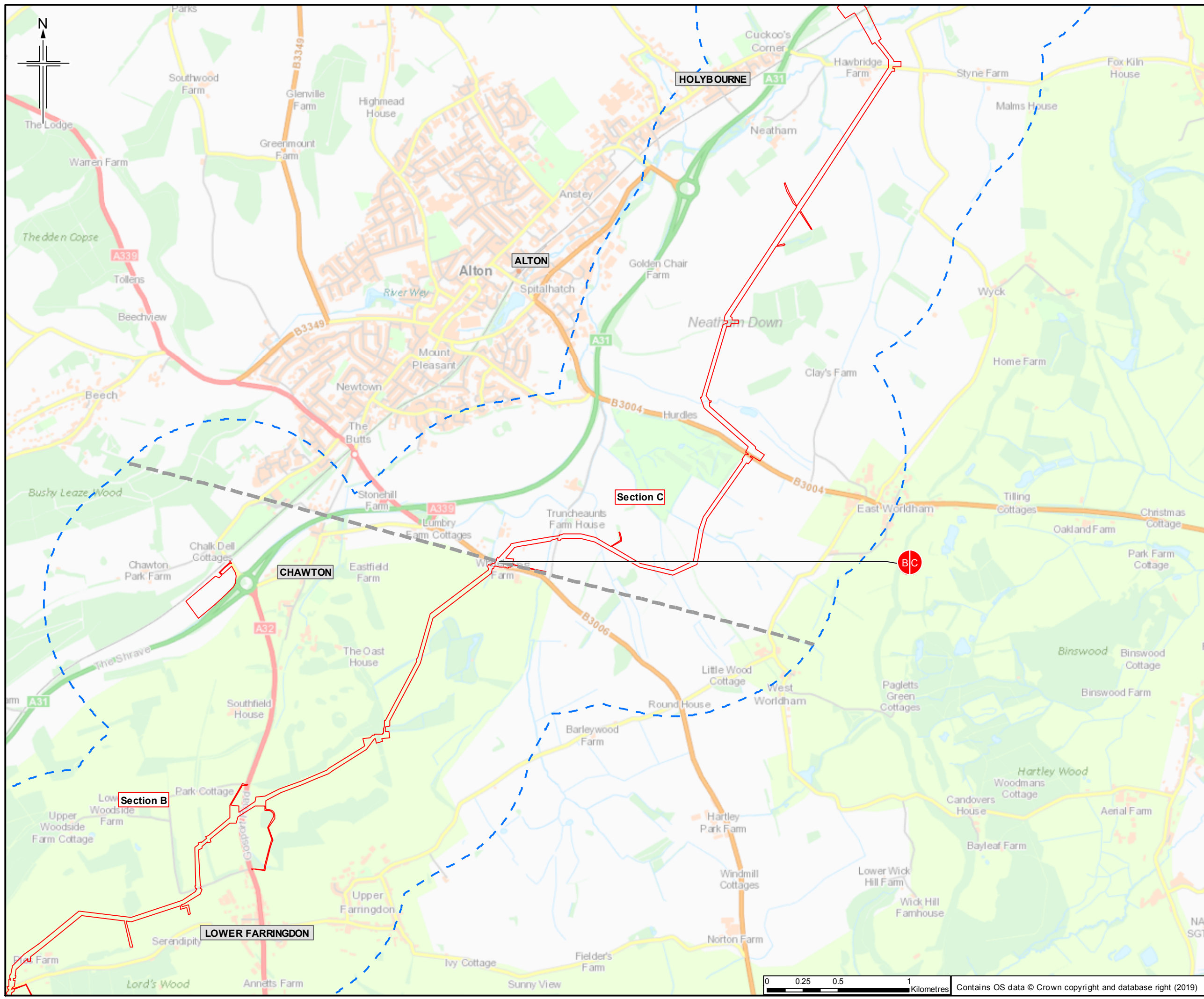
Project
 Southampton to London Pipeline Project

Drawing title
**ENVIRONMENTAL STATEMENT
 LOCATION OF SCHEME
 APFP Reg. (2009) 5(2)(o)**

| | | |
|-----------------|---------------------------------|--------------|
| Drawing Status | For Issue | |
| Scale | 1:25,000 @ A3 | DO NOT SCALE |
| Jacobs No. | B2325300 | |
| ProjectWise No. | B2325300-JAC-000-ENV-DRG-001001 | |
| Drawing number | Figure 1.1 Sheet 5 of 14 | Rev 0 |



Contains OS data © Crown copyright and database right (2019)



- Legend**
- Order Limits
 - Order Limits 1km buffer
 - Section break
 - Section break

Sheet displays parts of Section B and Section C

| Rev | Rev. Date | Purpose of revision | OrigDwn | Checked | Rev'd | Apprv'd |
|-----|-----------|---------------------|---------|---------|-------|---------|
| 0 | 1/23/2019 | For Issue | HM | NS | CW | SH |

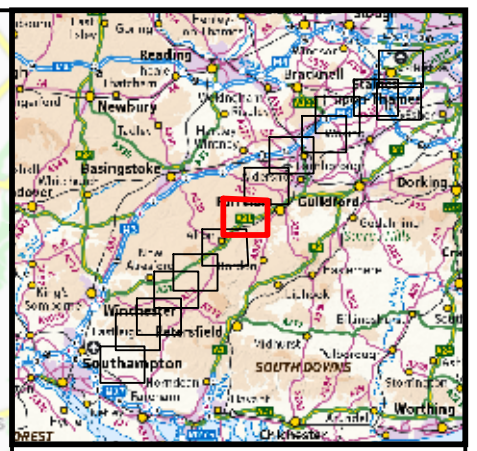
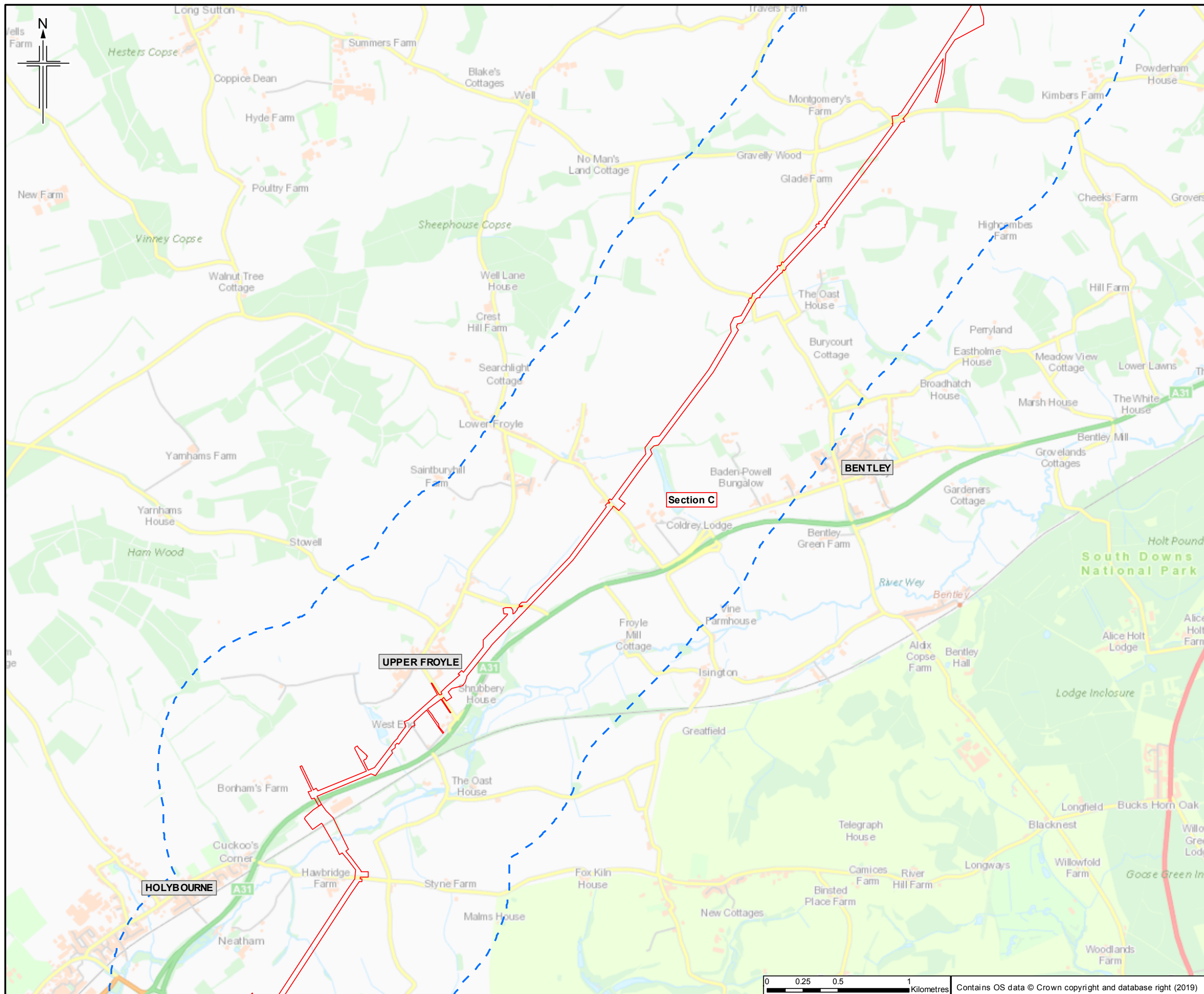


Client
Esso Petroleum Company, Limited
Ermyn House,
Ermyn Way,
Leatherhead,
Surrey,
KT22 8UX



Drawing title
**ENVIRONMENTAL STATEMENT
LOCATION OF SCHEME
APFP Reg. (2009) 5(2)(o)**

| Drawing Status | For Issue |
|------------------|---------------------------------|
| Scale | 1:25,000 @ A3 DO NOT SCALE |
| Jacobs No. | B2325300 |
| Project/Draw No. | B2325300-JAC-000-ENV-DRG-001001 |
| Drawing number | Figure 1.1 Sheet 6 of 14 |
| Rev | 0 |



- Legend**
- Order Limits
 - Order Limits 1km buffer
 - Section break
 - Section break

Sheet displays part of Section C

| Rev. | Rev. Date | Purpose of revision | OrigDwn | Checked | Rev'd | Apprv'd |
|------|-----------|---------------------|---------|---------|-------|---------|
| 0 | 1/23/2019 | For Issue | HM | NS | CW | SH |



Client
Esso Petroleum Company, Limited
Ermyn House,
Ermyn Way,
Leatherhead,
Surrey,
KT22 8UX

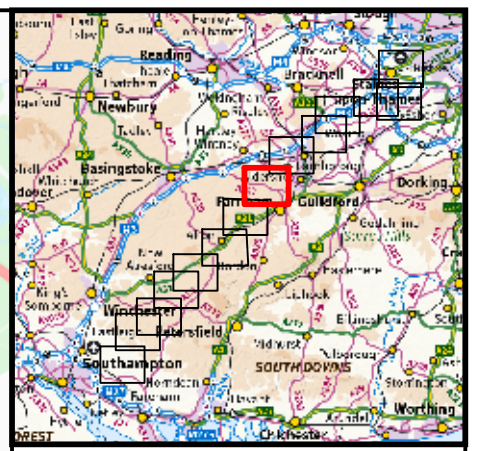
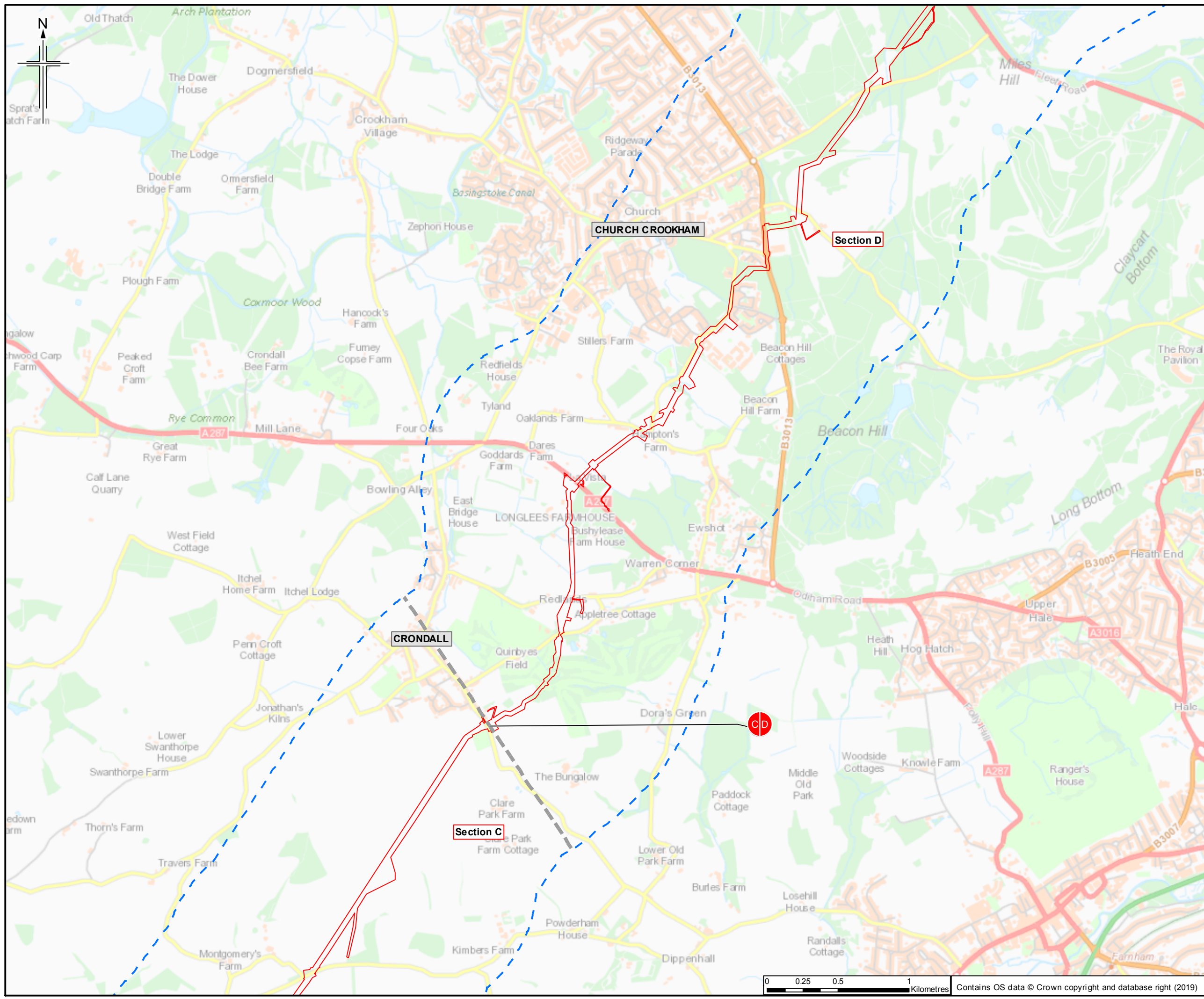


Drawing title
**ENVIRONMENTAL STATEMENT
LOCATION OF SCHEME
APFP Reg. (2009) 5(2)(o)**

| | | |
|-----------------|---------------------------------|--------------|
| Drawing Status | For Issue | |
| Scale | 1:25,000 @ A3 | DO NOT SCALE |
| Jacobs No. | B2325300 | |
| ProjectWise No. | B2325300-JAC-000-ENV-DRG-001001 | |
| Drawing number | Figure 1.1 Sheet 7 of 14 | Rev 0 |



Contains OS data © Crown copyright and database right (2019)



- Legend**
- Order Limits
 - Order Limits 1km buffer
 - Section break
 - Section break

Sheet displays parts of Section C and Section D

| Rev. | Date | Purpose of revision | OrigDwn | Checked | Rev'd | Apprv'd |
|------|-----------|---------------------|---------|---------|-------|---------|
| 0 | 1/23/2019 | For Issue | HM | NS | CW | SH |

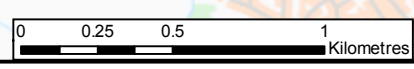


Client
Esso Petroleum Company, Limited
Ermyn House,
Ermyn Way,
Leatherhead,
Surrey,
KT22 8UX

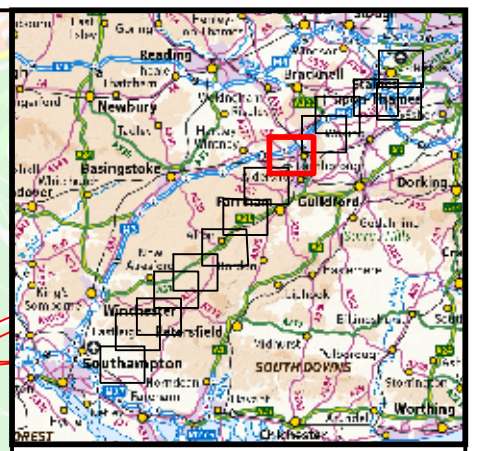
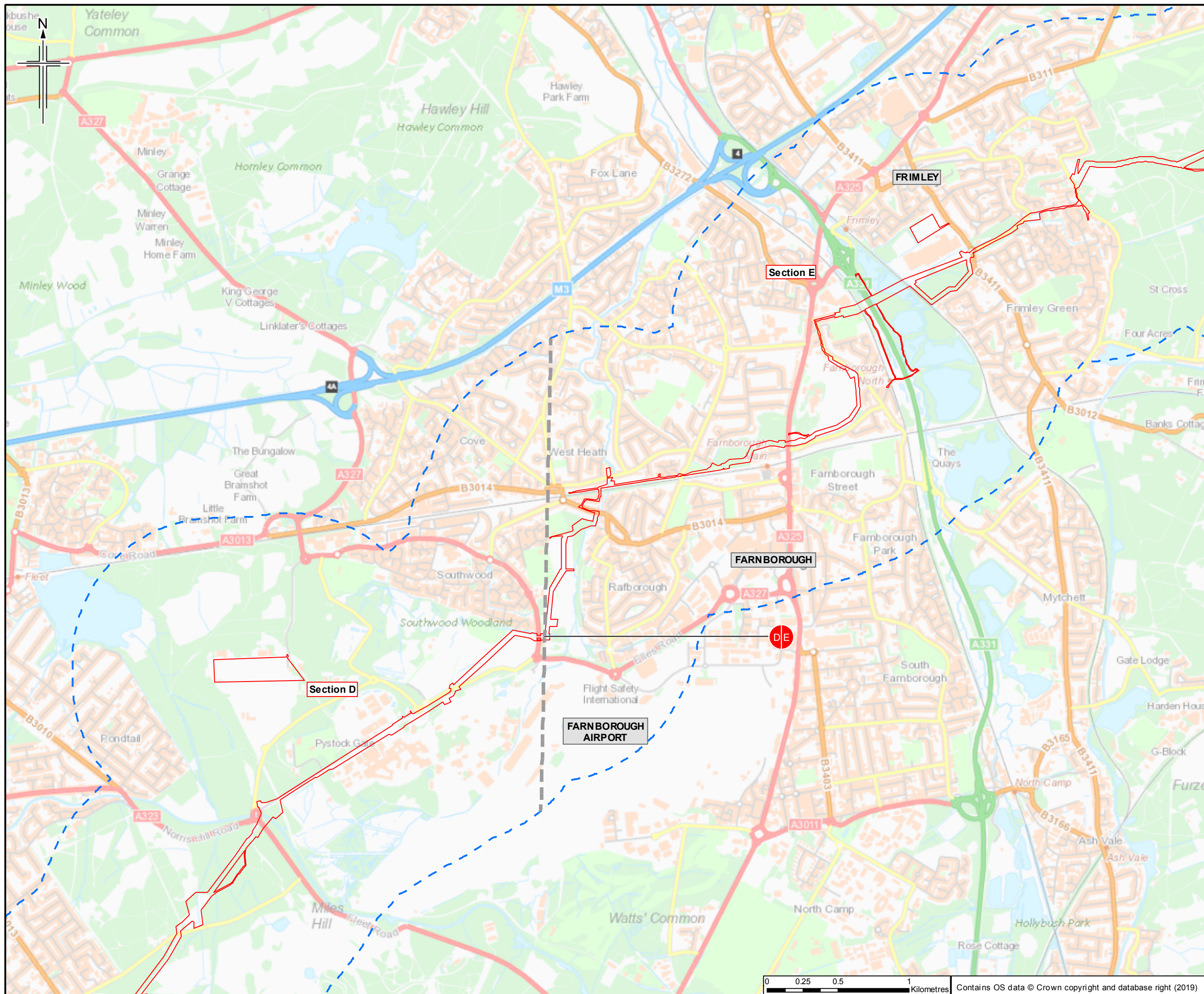


Drawing title
**ENVIRONMENTAL STATEMENT
LOCATION OF SCHEME
APFP Reg. (2009) 5(2)(o)**

| | |
|-----------------|---------------------------------|
| Drawing Status | For Issue |
| Scale | 1:25,000 @ A3 DO NOT SCALE |
| JACOBS No. | B2325300 |
| ProjectWise No. | B2325300-JAC-000-ENV-DRG-001001 |
| Drawing number | Figure 1.1 Sheet 8 of 14 |
| | Rev 0 |



Contains OS data © Crown copyright and database right (2019)



- Legend**
- Order Limits
 - Order Limits 1km buffer
 - Section break
 - Section break

Sheet displays parts of Section D and Section E

| Rev. | Rev. Date | Purpose of revision | OrigDwn | Checked | Rev'd | Apprv'd |
|------|-----------|---------------------|---------|---------|-------|---------|
| 0 | 1/23/2019 | For Issue | HM | NS | CW | SH |

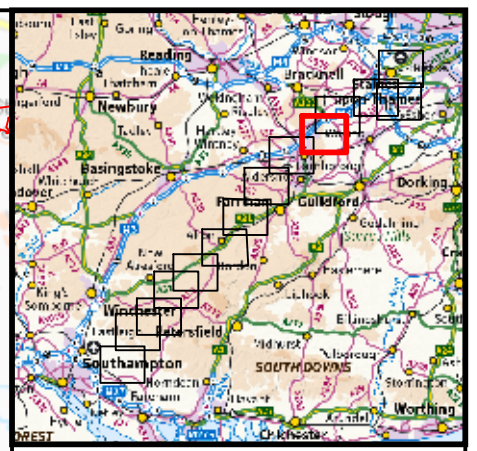
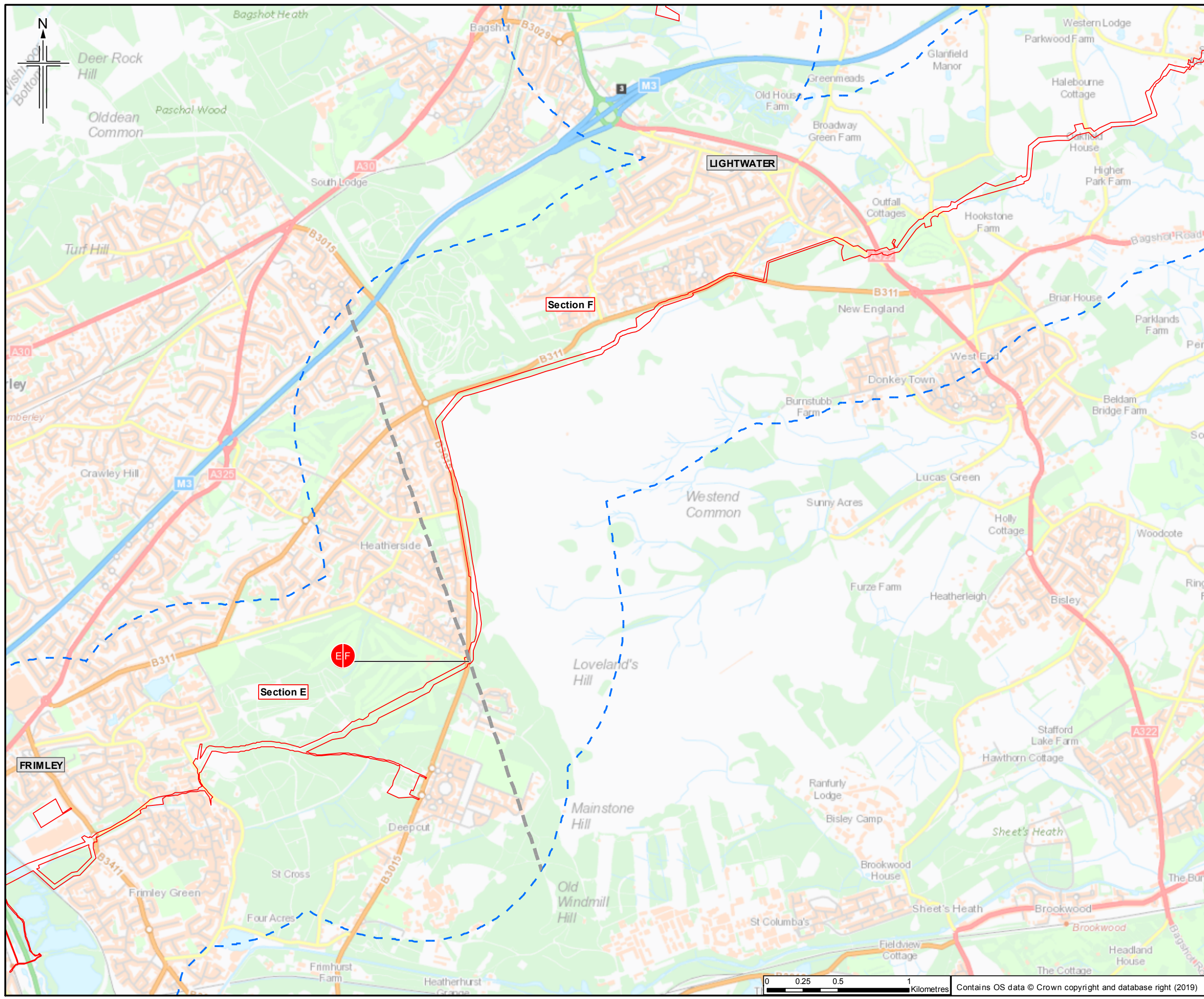


Client
Esso Petroleum Company, Limited
Ermyn House,
Ermyn Way,
Leatherhead,
Surrey,
KT22 8UX



Drawing title
**ENVIRONMENTAL STATEMENT
LOCATION OF SCHEME
APFP Reg. (2009) 5(2)(o)**

| Drawing Status | For Issue |
|-----------------|---------------------------------|
| Scale | 1:25,000 @ A3 DO NOT SCALE |
| JACOBS No. | B2325300 |
| ProjectWise No. | B2325300-JAC-000-ENV-DRG-001001 |
| Drawing number | Figure 1.1 Sheet 9 of 14 |
| Rev | 0 |



- Legend**
- Order Limits
 - Order Limits 1km buffer
 - Section break
 - Section break

Sheet displays parts of Section E and Section F

| Rev. | Rev. Date | Purpose of revision | OrigDwn | Checked | Rev'd | Apprv'd |
|------|-----------|---------------------|---------|---------|-------|---------|
| 0 | 1/23/2019 | For Issue | HM | NS | CW | SH |

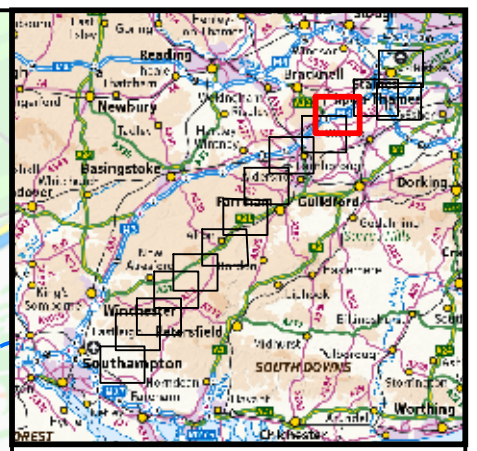
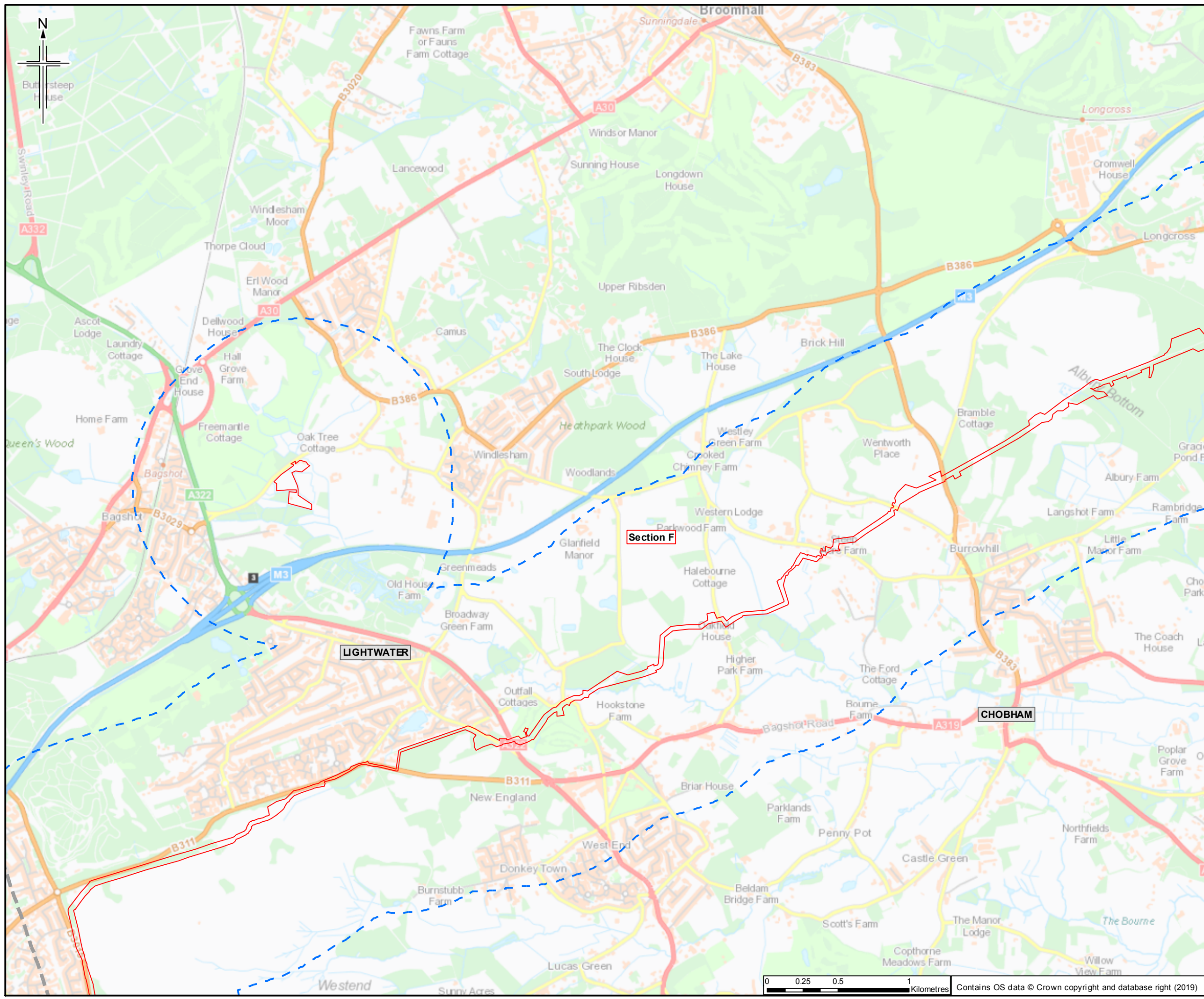


Client
Esso Petroleum Company, Limited
Ermyn House,
Ermyn Way,
Leatherhead,
Surrey,
KT22 8UX



Drawing title
**ENVIRONMENTAL STATEMENT
LOCATION OF SCHEME
APFP Reg. (2009) 5(2)(o)**

| Drawing Status | For Issue |
|-----------------|---------------------------------|
| Scale | 1:25,000 @ A3 DO NOT SCALE |
| JACOBS No. | B2325300 |
| ProjectWise No. | B2325300-JAC-000-ENV-DRG-001001 |
| Drawing number | Figure 1.1 Sheet 10 of 14 |
| Rev | 0 |



- Legend**
- Order Limits
 - Order Limits 1km buffer
 - Section break
 - Section break

Sheet displays part of Section F

| Rev. | Rev. Date | Purpose of revision | Orig'Dwn | Checked | Rev'd | Apprv'd |
|------|-----------|---------------------|----------|---------|-------|---------|
| 0 | 1/23/2019 | For Issue | HM | NS | CW | SH |

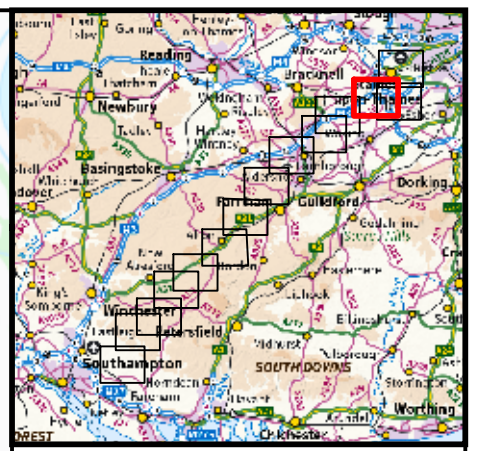
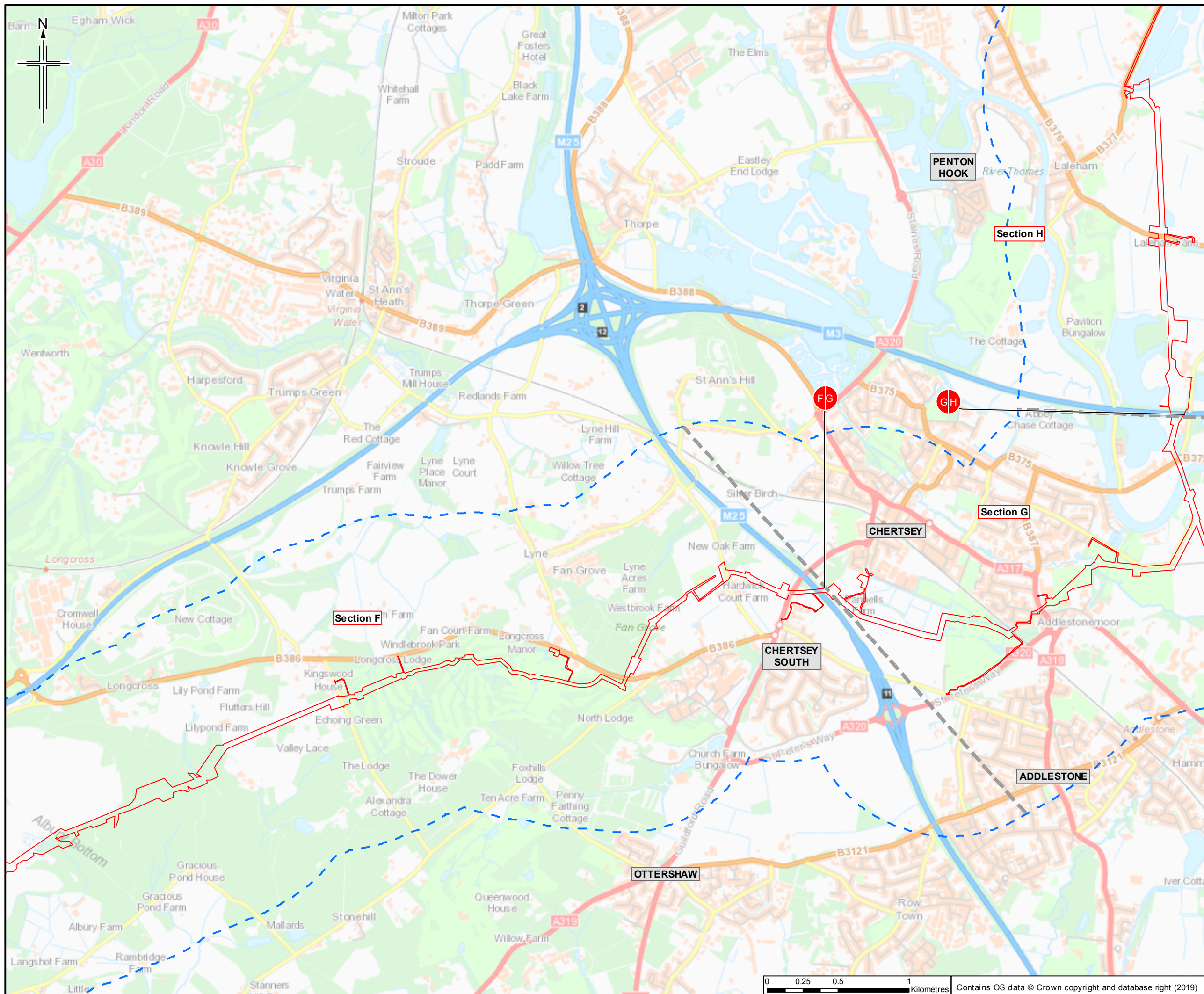


Client
Esso Petroleum Company, Limited
Ermyn House,
Ermyn Way,
Leatherhead,
Surrey,
KT22 8UX



Drawing title
**ENVIRONMENTAL STATEMENT
LOCATION OF SCHEME
APFP Reg. (2009) 5(2)(o)**

| Drawing Status | For Issue |
|-----------------|---------------------------------|
| Scale | 1:25,000 @ A3 DO NOT SCALE |
| JACOBS No. | B2325300 |
| ProjectWise No. | B2325300-JAC-000-ENV-DRG-001001 |
| Drawing number | Figure 1.1 Sheet 11 of 14 |
| Rev | 0 |



- Legend**
- Order Limits
 - Order Limits 1km buffer
 - Section break
 - Section break

Sheet displays parts of Section F, Section G and Section H

| | | | | | | |
|------|-----------|---------------------|---------|---------|-------|---------|
| 0 | 1/23/2019 | For Issue | HM | NS | CW | SH |
| Rev. | Rev. Date | Purpose of revision | OrigDwn | Checked | Rev'd | Apprv'd |
| | | | | | | |

Client
Esso Petroleum Company, Limited
Ermyn House,
Ermyn Way,
Leatherhead,
Surrey,
KT22 8UX

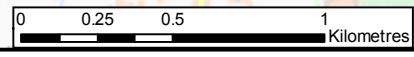
Project

Southampton to London Pipeline Project

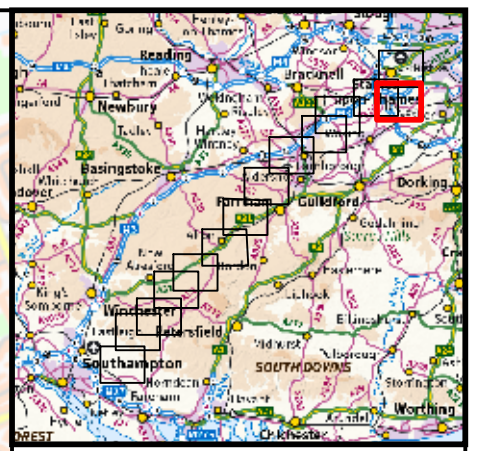
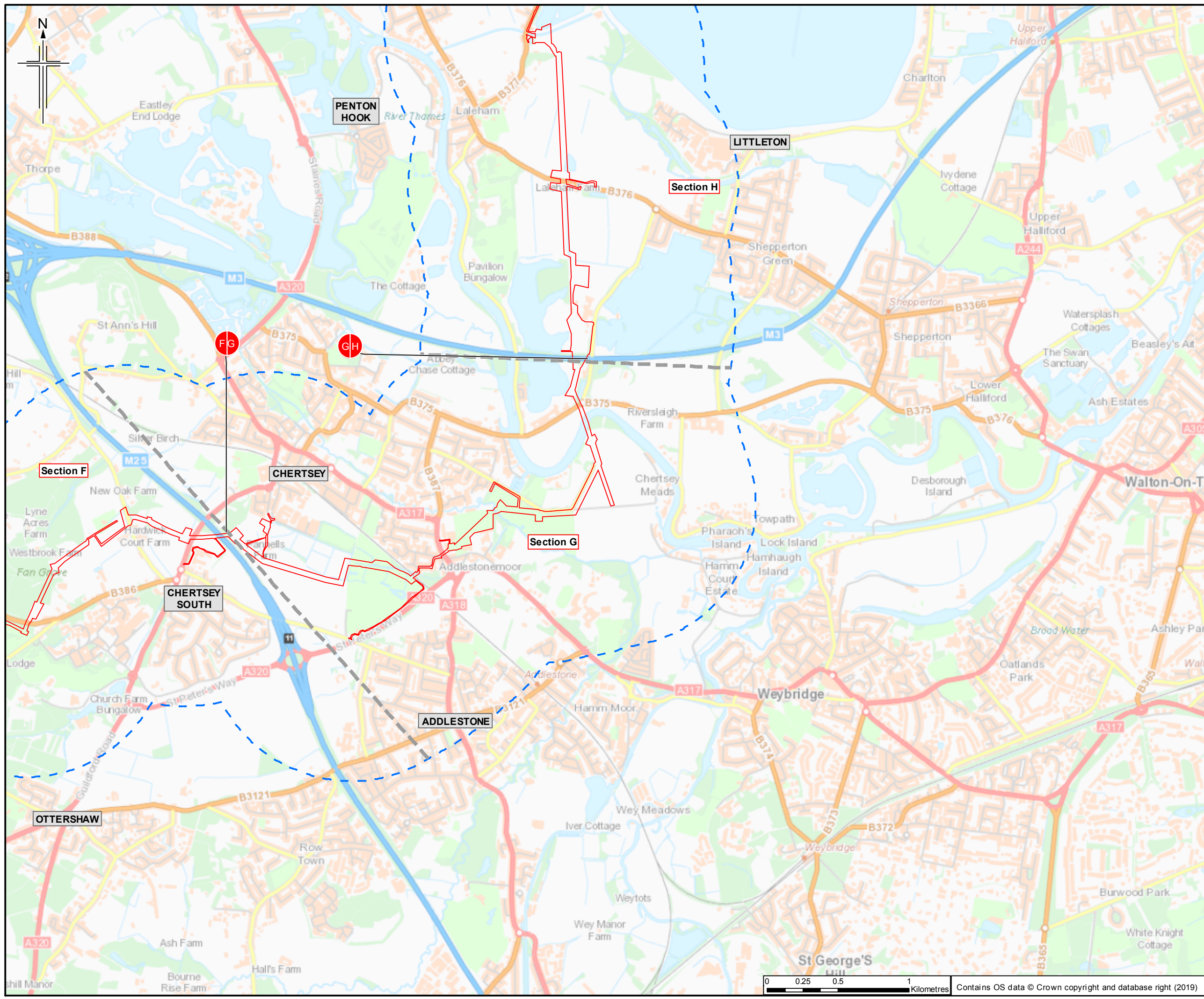
Drawing title

**ENVIRONMENTAL STATEMENT
LOCATION OF SCHEME
APFP Reg. (2009) 5(2)(o)**

| | | |
|-----------------|---------------------------------|--------------|
| Drawing Status | For Issue | |
| Scale | 1:25,000 @ A3 | DO NOT SCALE |
| JACOBS No. | B2325300 | |
| ProjectWise No. | B2325300-JAC-000-ENV-DRG-001001 | |
| Drawing number | Figure 1.1 Sheet 12 of 14 | Rev 0 |



Contains OS data © Crown copyright and database right (2019)



- Legend**
- Order Limits
 - Order Limits 1km buffer
 - Section break
 - Section break

Sheet displays parts of Section F, Section G and Section H

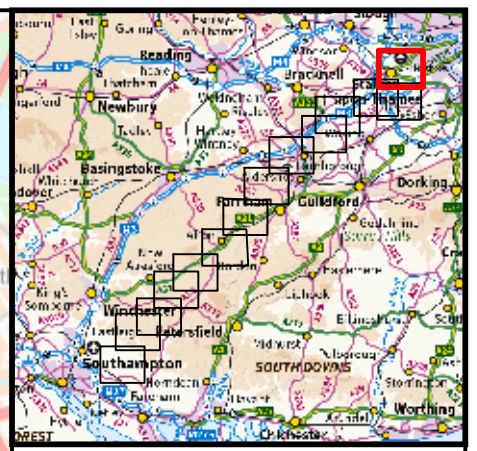
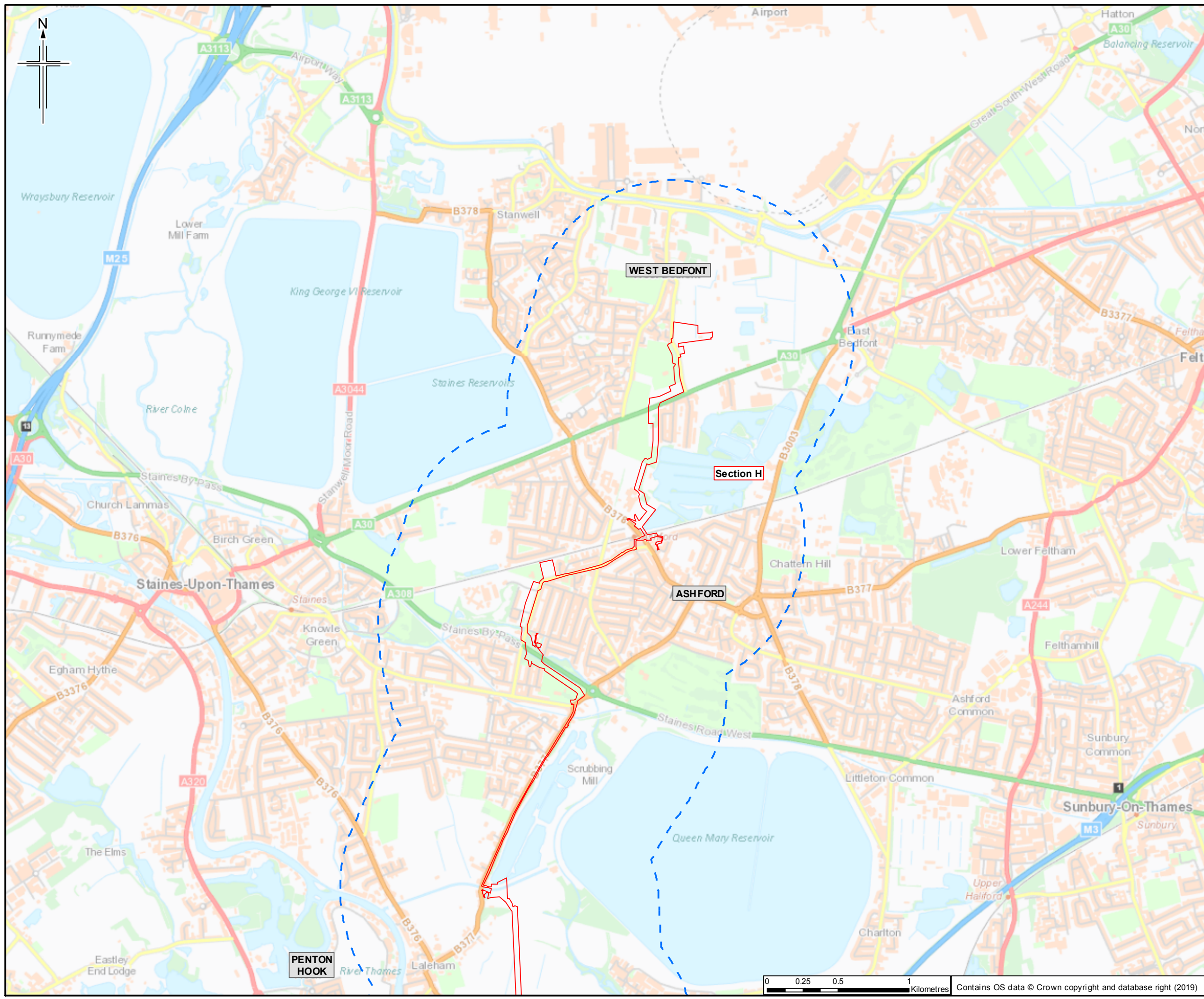
| | | | | | | |
|------|-----------|---------------------|---------|---------|-------|---------|
| 0 | 1/23/2019 | For Issue | HM | NS | CW | SH |
| Rev. | Rev. Date | Purpose of revision | OrigDwn | Checked | Rev'd | Apprv'd |
| | | | | | | |

Client
 Esso Petroleum Company, Limited
 Ermyn House,
 Ermyn Way,
 Leatherhead,
 Surrey,
 KT22 8UX

Project
 Southampton to London Pipeline Project

Drawing title
 ENVIRONMENTAL STATEMENT
 LOCATION OF SCHEME
 APFP Reg. (2009) 5(2)(o)

| | | |
|-----------------|---------------------------------|--------------|
| Drawing Status | For Issue | |
| Scale | 1:25,000 @ A3 | DO NOT SCALE |
| JACOBS No. | B2325300 | |
| ProjectWise No. | B2325300-JAC-000-ENV-DRG-001001 | |
| Drawing number | Figure 1.1 Sheet 13 of 14 | Rev 0 |



- Legend**
- Order Limits
 - Order Limits 1km buffer
 - Section break
 - Section break

Sheet displays part of Section H

| Rev. | Rev. Date | Purpose of revision | OrigDwn | Checked | Rev'd | Apprv'd |
|------|-----------|---------------------|---------|---------|-------|---------|
| 0 | 1/23/2019 | For Issue | HM | NS | CW | SH |

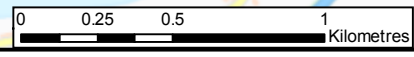


Client
Esso Petroleum Company, Limited
Ermyn House,
Ermyn Way,
Leatherhead,
Surrey,
KT22 8UX



Drawing title
**ENVIRONMENTAL STATEMENT
LOCATION OF SCHEME
APFP Reg. (2009) 5(2)(o)**

| | | |
|-----------------|---------------------------------|--------------|
| Drawing Status | For Issue | |
| Scale | 1:25,000 @ A3 | DO NOT SCALE |
| Jacobs No. | B2325300 | |
| ProjectWise No. | B2325300-JAC-000-ENV-DRG-001001 | |
| Drawing number | Figure 1.1 Sheet 14 of 14 | Rev 0 |



Contains OS data © Crown copyright and database right (2019)